



Operator's Manual Supplement

13ft Platform

S[®]-45 XC[™]

S[®]-45 XC[™] TraX[™]

S[®]-65 XC[™]

S[®]-65 XC[™] TraX[™]

S[®]-85 XC[™]

ANSI/CSA
North America
South America
Asia

Original Instructions
First Edition
Second Printing
Part No. 1312371GT

Introduction

Important

Read, understand and obey these safety rules and operating instructions before operating this machine. Only trained and authorized personnel shall be permitted to operate this machine. This manual should be considered a permanent part of your machine and should remain with the machine at all times. If you have any questions, contact us.

Contact Us:

Internet: www.genielift.com

E-mail: awp.techpub@terex.com

Approved Model

S®-45 XC™

S®-45 XC™ Trax™

S®-65 XC™

S®-65 XC™ Trax™

S®-85 XC™

WARNING

Do not install the 13ft / 4m platform on any Genie product other than the approved models.

Copyright © 2021 by Terex Corporation

First Edition: Second Printing, April 2023

Genie and "S" are registered trademarks of Terex South Dakota, Inc. in the U.S.A. and many other countries.

"XC" and "TraX" are trademarks of Terex South Dakota, Inc.

These machines comply with
ANSI/SAIA A92.20
CAN/CSA B354.6

S-45 XC, S-45 XC Trax, S-65 XC, S-65 XC Trax, S-85 XC with 13ft / 4m Platform



Danger

Failure to obey the instructions and safety rules in this manual will result in death or serious injury.

Note: These installation instructions only apply to the Genie models listed on the front cover.

DANGER

Using the 13ft / 4m Platform with the options below will result in death or serious injury.

DANGER

Using the 13ft / 4m Platform on a machine without the appropriate 13ft / 4m platform software will result in death or serious injury.

Authorized Platform Configurations :

- ▲ Lift Guard Contact Alarm (option)
- ▲ Pipe Cradle (option)

Non-Authorized Platform Configurations:

- ▲ Panel cradle - single piece (option)
- ▲ 6 ft Half mesh Plate/Gate (option)
- ▲ 8 ft Half mesh Plate/Gate (option)
- ▲ 6 ft Auxiliary Top Rail (option)
- ▲ 8 ft Auxiliary Top Rail (option)
- ▲ 6 ft Aircraft Protection (option)
- ▲ 8 ft Aircraft Protection (option)
- ▲ Operator Protective Structure (OPS) (option)
- ▲ Lift Tools Access Deck (option)
- ▲ Lift Tools Expo Installer (option)
- ▲ Fall Arrest Bar (option)

S-45 XC, S-45 XC Trax, S-65 XC, S-65 XC Trax, S-85 XC with 13ft / 4m Platform

▲ 13ft / 4m Platform Safety

Read, understand and obey all warnings and instructions provided with the 13ft / 4m platform.

Do not exceed the rated platform capacity.

Verify the 13ft / 4m platform is securely installed.

Install the 13ft / 4m platform software appropriate for the approved model, before operating the machine.

Verify the Installation of the appropriate software of the 13ft / 4m platform before operating the machine. Each approved model requires the appropriate software version.

Do not move the platform into the unrestricted range of motion zone.

When the 13ft / 4m platform assembly is attached, this manual should be considered a permanent part of your machine and should remain with the machine at all times.

Symbol and Hazard Pictorials Definitions



Read the supplement, part number 1312371GT



Tip-over hazard



Maximum capacity
600 lbs/272 kg



Lanyard anchorage points



Crushing hazard

S-45 XC, S-45 XC Trax, S-65 XC, S-65 XC Trax, S-85 XC with 13ft / 4m Platform

Pre-operation Inspection

- ☐ Verify the operator's manual and any necessary supplements are complete, legible and in the storage container located in the platform.
- ☐ Verify all decals are legible and in place.

Check the 13ft / 4m Platform for damage, improperly installed or missing parts and unauthorized modifications.

- ☐ Nuts, bolts and other fasteners
- ☐ Cracks in structural components
- ☐ Dents or damage to 13ft / 4m Platform

S-45 XC, S-45 XC Trax, S-65 XC, S-65 XC Trax, S-85 XC Decal Inspections - WORD

Decal Inspection - S-45 XC, S-45 XC Trax with Words

Use the inspection to verify that all decals are legible and in place. Decals may vary depending on machine configuration. These decals are also applicable to S-45 XC Trax, even if the picture does not show the tracks.

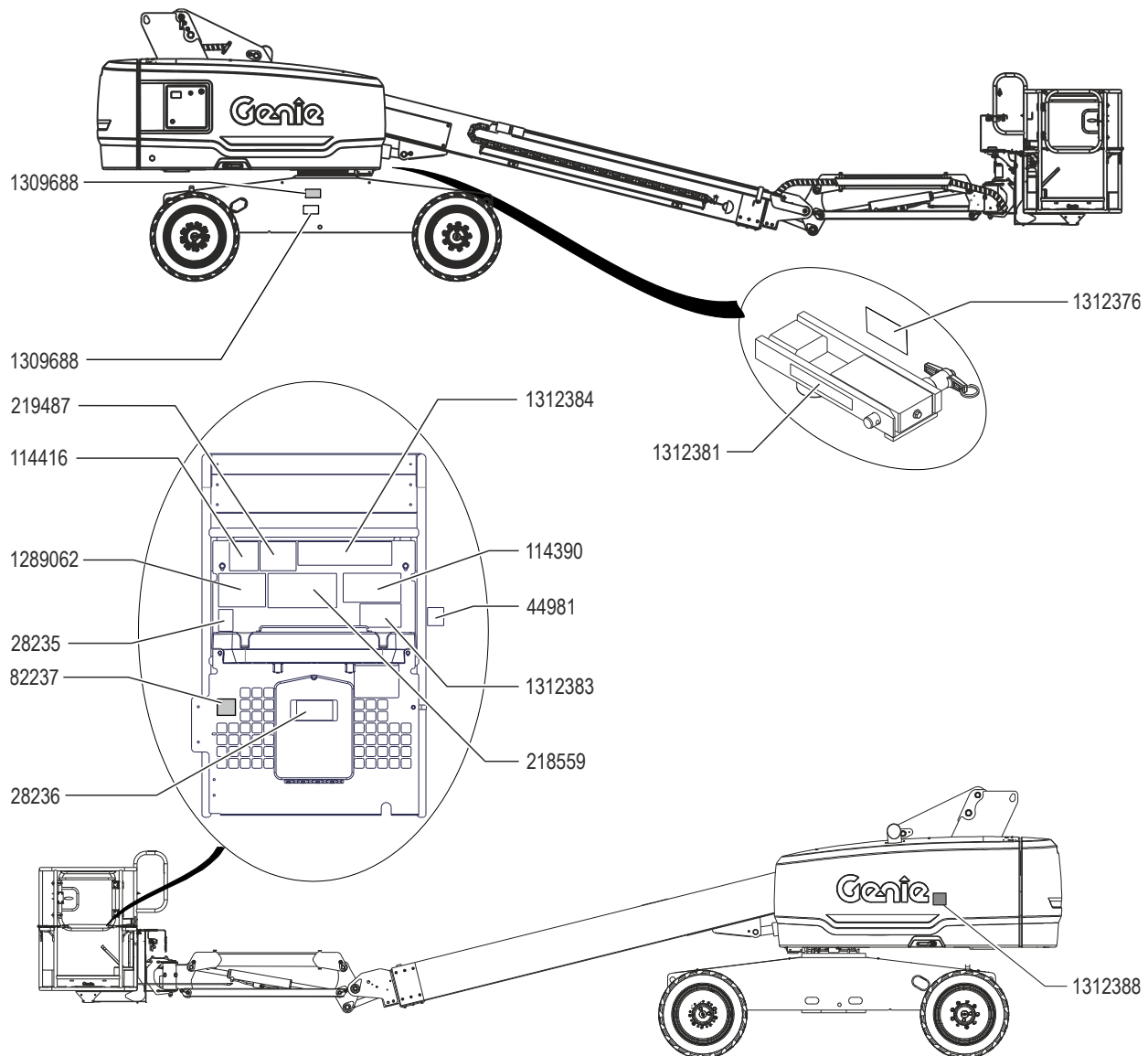
Part No.	Decal Description	Qty
28235	Label – Power to Platform, 115V	1
28236	Warning – Improper Operation	1
44981	Label – Air Line to Platform	1
82237	Danger – Electrocutation Hazard	1
114390	Danger – Electrocutation Hazard	1
114416	Danger – Tip-over Hazard, Tilt Alarm	1
218559	Danger, Warning – Tip-over, Crush Hazard	1
219487	Label – Platform Overload	1
1289062	Warning – Runaway Machine Hazard, S-40/45 XC	1
1309688	Decal - Swing Lock, 13ft / 4m Platform S45XC	2
1312376	Label – Warning, Crushing Hazard, Word	1
1312381	Label - Lock Transport S45XC	1
1312383	Label – Warning, Read the Manual, Word	1
1312384	Label – Danger, Capacity, 13ft / 4m Platform, Word S45XC	1
1312388	Label - 13ft / 4m Platform, Max Allowable Chassis Inclination	1



Shading indicates decal is hidden from view, i.e. under covers

S-45 XC, S-45 XC Trax, S-65 XC, S-65 XC Trax, S-85 XC Decal Inspections - WORD

Decal Inspection S-45 XC, S-45 XC Trax with Words



S-45 XC, S-45 XC Trax, S-65 XC, S-65 XC Trax, S-85 XC Decal Inspections - WORD

Decal Inspection - S-65 XC, S-65 XC Trax with Words

Use the inspection to verify that all decals are legible and in place. Decals may vary depending on machine configuration. These decals are also applicable to S-65 XC Trax, even if the picture does not show the tracks.

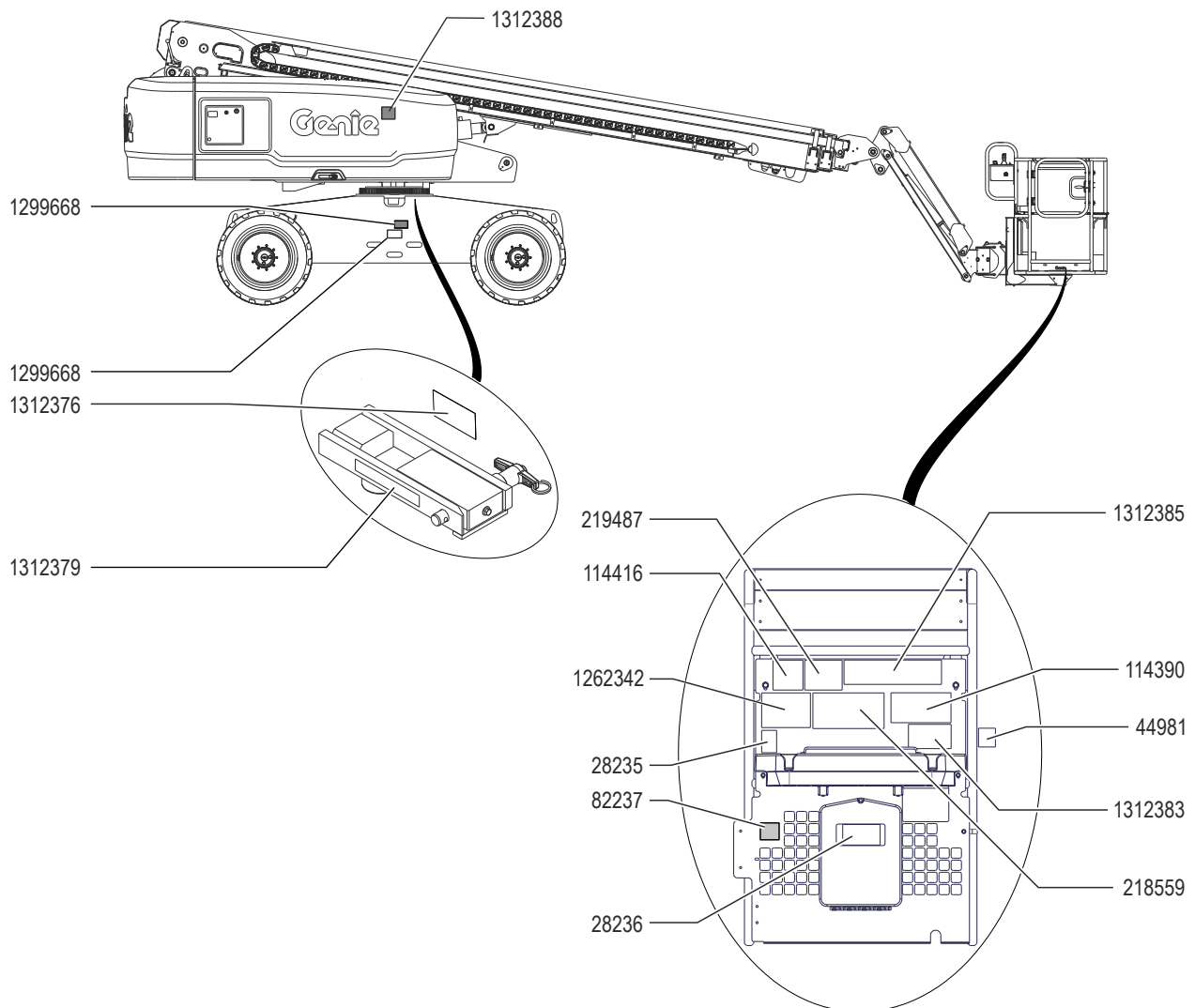
Part No.	Decal Description	Qty
28235	Label – Power to Platform, 115V	1
28236	Warning – Improper Operation	1
44981	Label – Air Line to Platform	1
82237	Danger – Electrocuting Hazard	1
114390	Danger – Electrocuting Hazard	1
114416	Danger – Tip-over Hazard, Tilt Alarm	1
218559	Danger, Warning – Tip-over, Crush Hazard	1
219487	Label – Platform Overload	1
1262342	Warning – Slope Rating	1
1299668	Decal - Swing Lock, 13ft / 4m Platform, S65XC	2
1312376	Label – Warning, Crushing Hazard, Word	1
1312379	Label, Lock Transport, S65XC	1
1312383	Label – Warning, Read the Manual, Word	1
1312385	Label – Danger, Capacity, 13ft / 4m Platform, Word S65XC	1
1312388	Label - 13ft / 4m Platform, Max Allowable Chassis Inclination	1



Shading indicates decal is hidden from view, i.e. under covers

S-45 XC, S-45 XC Trax, S-65 XC, S-65 XC Trax, S-85 XC Decal Inspections - WORD

Decal Inspection S-65 XC, S-65 XC Trax with Words



S-45 XC, S-45 XC Trax, S-65 XC, S-65 XC Trax, S-85 XC Decal Inspections - WORD

Decal Inspection - S-85 XC with Words

Use the inspection to verify that all decals are legible and in place. Decals may vary depending on machine configuration.

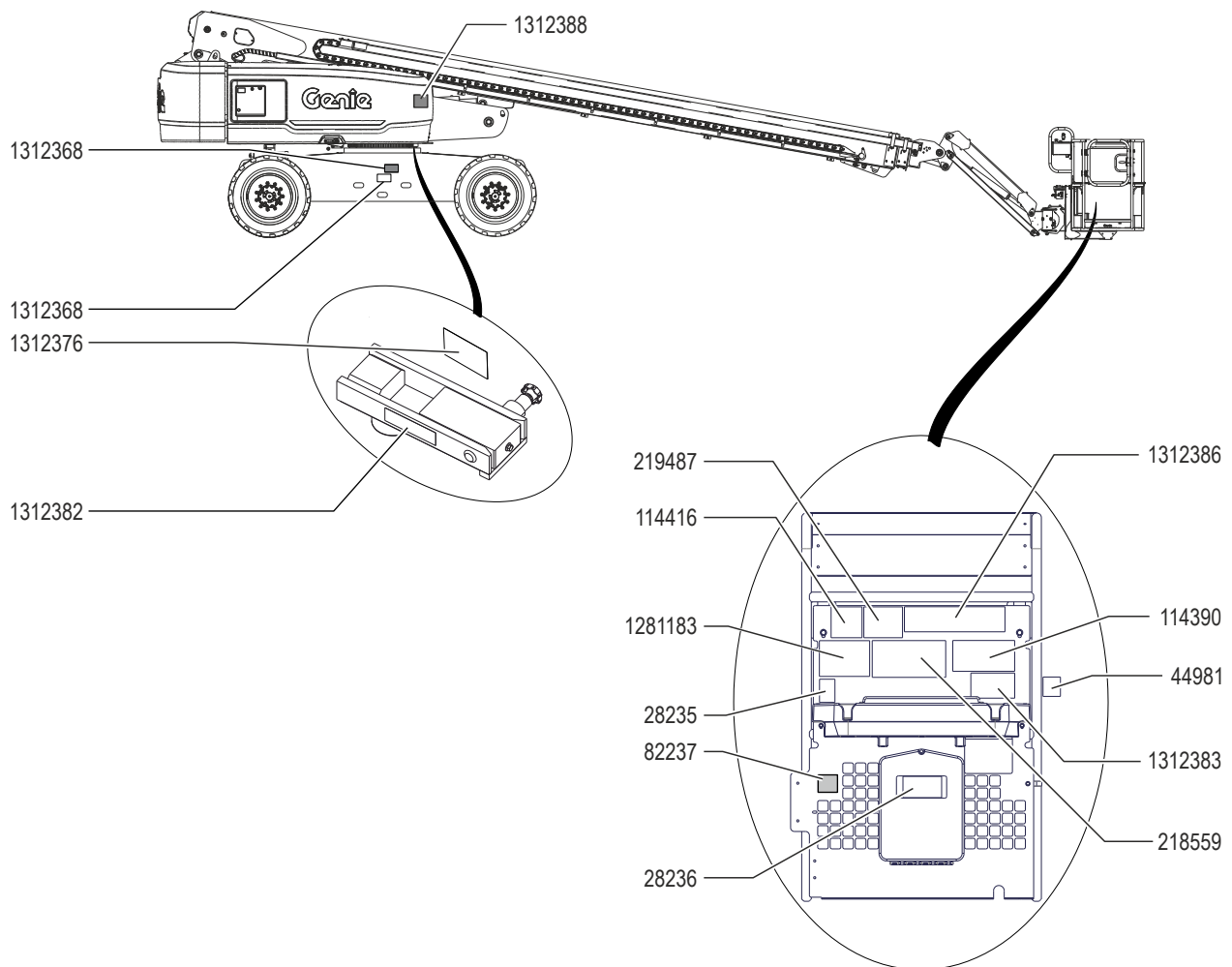
Part No.	Decal Description	Qty
28235	Label – Power to Platform, 115V	1
28236	Warning – Improper Operation	1
44981	Label – Air Line to Platform	1
82237	Danger – Electrocuting Hazard	1
114390	Danger – Electrocuting Hazard	1
114416	Danger – Tip-over Hazard, Tilt Alarm	1
218559	Danger, Warning – Tip-over, Crush Hazard	1
219487	Label – Platform Overload	1
1281183	Warning – Runaway Machine Hazard, S-80/85 XC	1
1312368	Decal - Swing Lock, 13ft / 4m Platform, S85XC	2
1312376	Label – Warning, Crushing Hazard, Word	1
1312382	Label – Lock Transport, S85XC	1
1312383	Label – Warning, Read the Manual, Word	1
1312386	Label– Danger, Capacity, 13ft / 4m Platform, Word S85XC	1
1312388	Label - 13ft / 4m Platform, Max Allowable Chassis Inclination	1



Shading indicates decal is hidden from view, i.e. under covers

S-45 XC, S-45 XC Trax, S-65 XC, S-65 XC Trax, S-85 XC Decal Inspections - WORD

Decal Inspection S-85 XC with Words



S-45 XC, S-45 XC Trax, S-65 XC, S-65 XC Trax, S-85 XC Decal Inspections - Symbols

Decal Inspection - S-45 XC, S-45 XC Trax with Symbols

Use the inspection to verify that all decals are legible and in place. Decals may vary depending on machine configuration. These decals are also applicable to S-45 XC Trax, even if the picture does not show the tracks.

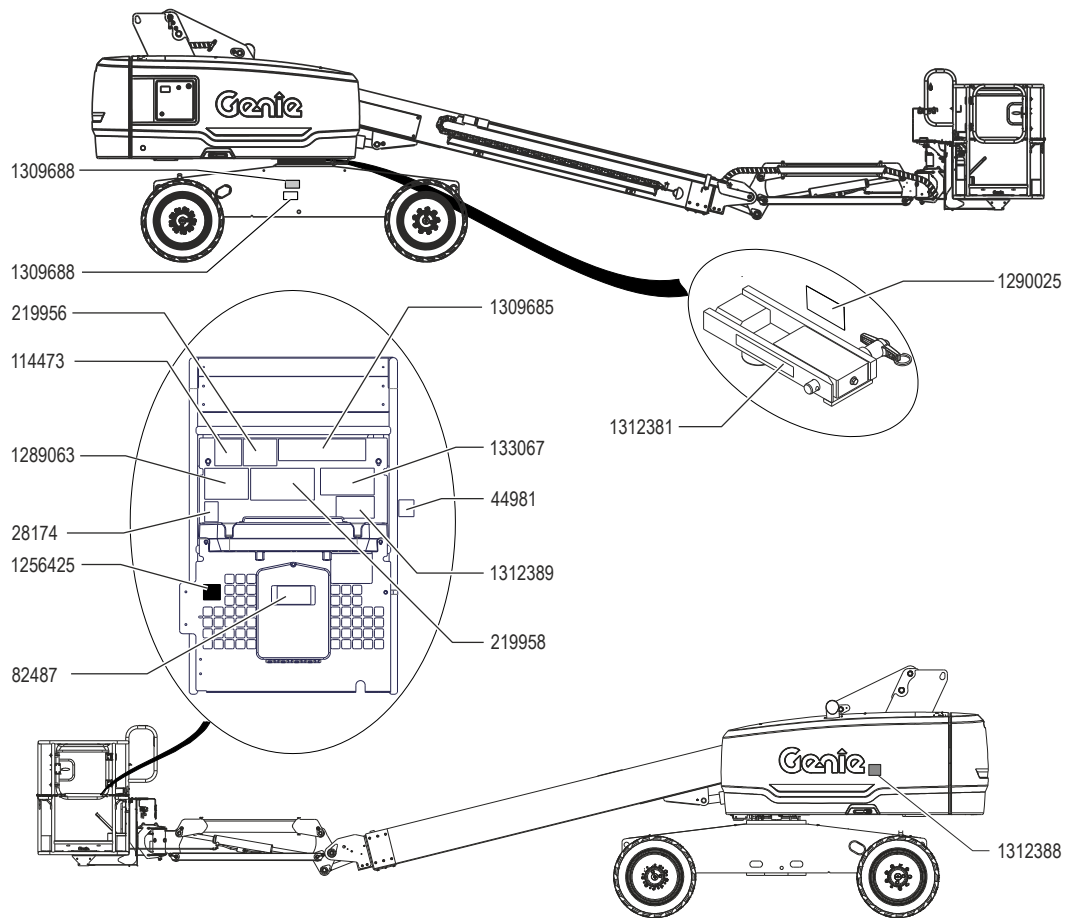
Part No.	Decal Description	Qty
28174	Label – Power to Platform, 230V	1
44981	Label – Air Line to Platform	1
82487	Label – Read the Manual	1
114473	Label – Tilt Alarm	1
133067	Label – Electrocution Hazard	1
219956	Label – Platform Overload	1
219958	Label – Tip-over, Crush Hazard	1
1256425	Label – Danger, Electrocution Hazard	1
1289063	Warning – Runaway Machine Hazard	1
1290025	Label – Warning, Crushing Hazard, 50X25	1
1309688	Decal - Swing Lock, 13ft / 4m Platform S45XC	2
1312381	Label - Lock Transport S45XC	1
1312384	Label – Danger, Capacity, 13ft / 4m Platform, Word S45XC 1309685	1
1312388	Label - 13ft / 4m Platform, Max Allowable Chassis Inclination	1
1312389	Label – Warning, Read the Manual, Symbol	1



Shading indicates decal is hidden from view, i.e. under covers

S-45 XC, S-45 XC Trax, S-65 XC, S-65 XC Trax, S-85 XC Decal Inspections - Symbols

Decal Inspection S-45 XC, S-45 XC Trax with Symbols



S-45 XC, S-45 XC Trax, S-65 XC, S-65 XC Trax, S-85 XC Decal Inspections - Symbols

Decal Inspection - S-65 XC, S-65 XC Trax with Symbols

Use the inspection to verify that all decals are legible and in place. Decals may vary depending on machine configuration. These decals are also applicable to S-65 XC Trax, even if the picture does not show the tracks.

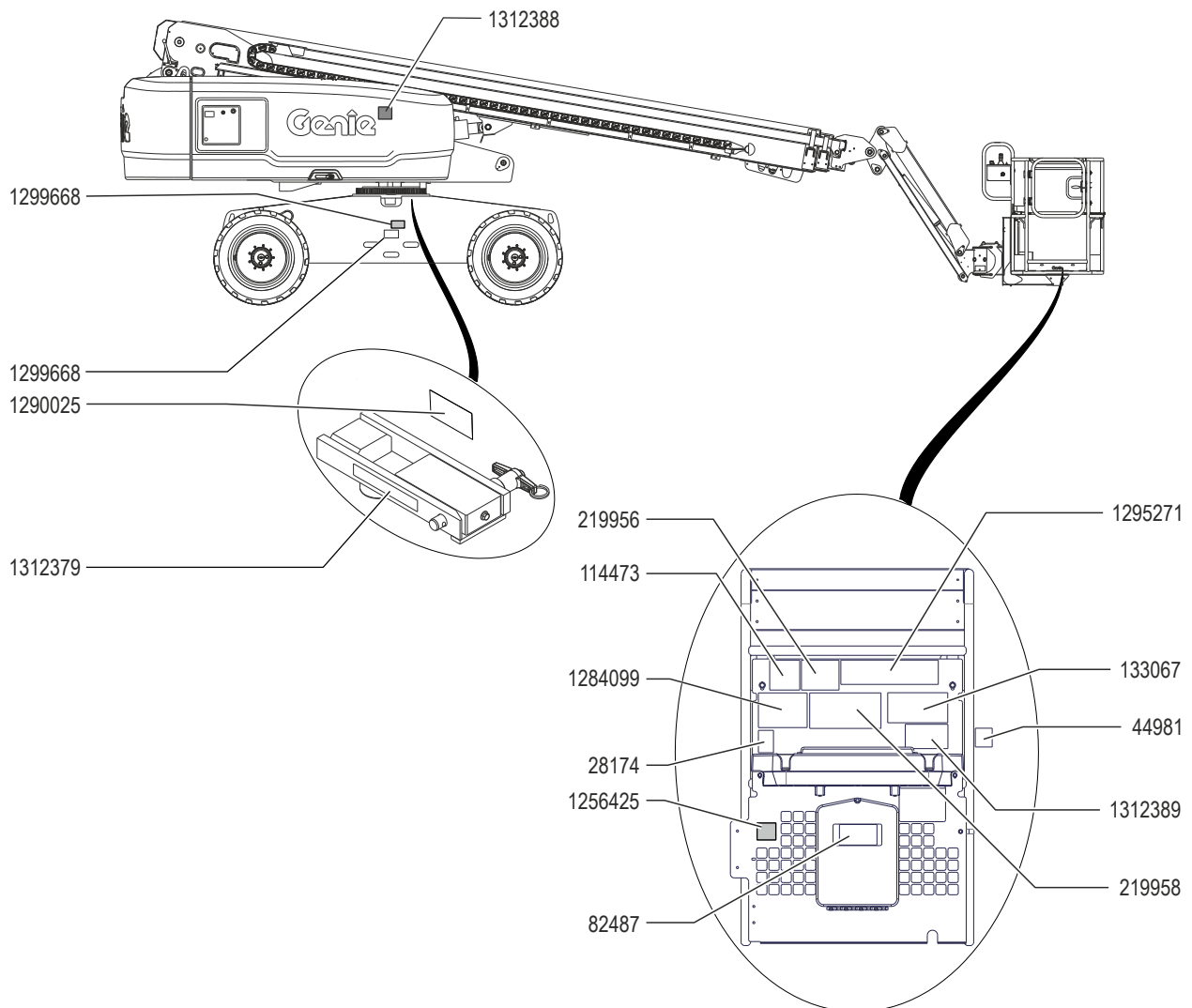
Part No.	Decal Description	Qty
28174	Label – Power to Platform, 230V	1
44981	Label – Air Line to Platform	1
82487	Label – Read the Manual	1
114473	Label – Tilt Alarm	1
133067	Label – Electrocution Hazard	1
219956	Label – Platform Overload	1
219958	Label – Tip-over, Crush Hazard	1
1256425	Label – Danger, Electrocution Hazard	1
1284099	Warning – Runaway Machine Hazard	1
1290025	Label – Warning, Crushing Hazard, 50X25	1
1295271	Danger – Capacity, S65XC 13ft / 4m Platform S65XC	1
1299668	Decal - Swing Lock, 13ft / 4m Platform S65XC	2
1312379	Label, Lock Transport S65XC	1
1312388	Label - 13ft / 4m Platform, Max Allowable Chassis Inclination	1
1312389	Label – Warning, Read the Manual, Symbol	1



Shading indicates decal is hidden from view, i.e. under covers

S-45 XC, S-45 XC Trax, S-65 XC, S-65 XC Trax, S-85 XC Decal Inspections - Symbols

Decal Inspection S-65 XC, S-65 XC Trax with Symbols



S-45 XC, S-45 XC Trax, S-65 XC, S-65 XC Trax, S-85 XC Decal Inspections - Symbols

Decal Inspection - S-85 XC with Symbols

Use the inspection to verify that all decals are legible and in place. Decals may vary depending on machine configuration.

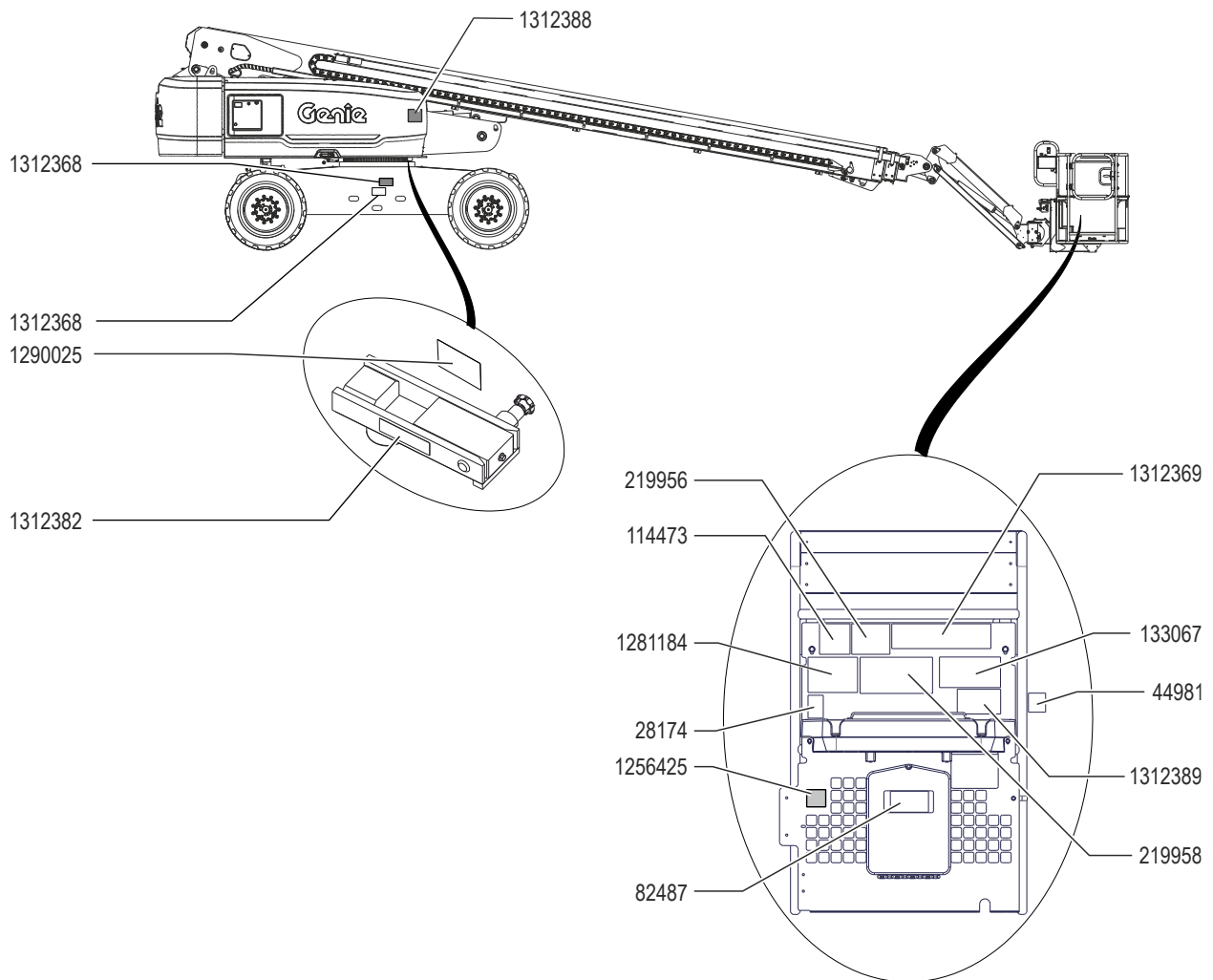
Part No.	Decal Description	Qty
28174	Label – Power to Platform, 230V	1
44981	Label – Air Line to Platform	1
82487	Label – Read the Manual	1
114473	Label – Tilt Alarm	1
133067	Label – Electrocution Hazard	1
219956	Label – Platform Overload	1
219958	Label – Tip-over, Crush Hazard	1
1256425	Label – Danger, Electrocution Hazard	1
1281184	Label – Runaway Machine Hazard, S-80/85 XC	1
1290025	Label – Warning, Crushing Hazard, 50X25	1
1312368	Decal - Swing Lock, 13ft / 4m Platform, S85XC	2
1312369	Danger – Capacity, S85XC, 13ft / 4m Platform	1
1312382	Label – Lock Transport, S85XC	1
1312388	Label - 13ft / 4m Platform, Max Allowable Chassis Inclination	1
1312389	Label – Warning, Read the Manual, Symbol	1



Shading indicates decal is hidden from view, i.e. under covers

S-45 XC, S-45 XC Trax, S-65 XC, S-65 XC Trax, S-85 XC Decal Inspections - Symbols

Decal Inspection S-85 XC with Symbols

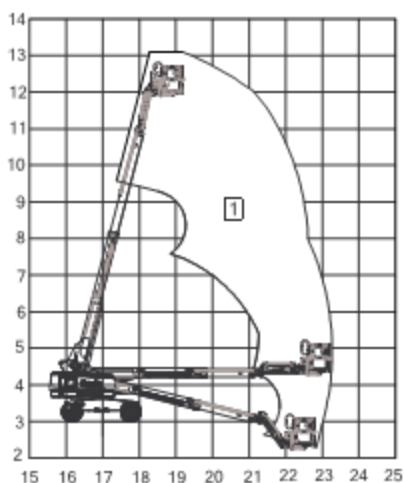


S-45 XC, S-45 XC Trax, S-65 XC, S-65 XC Trax, S-85 XC with 13ft / 4m Platform

Platform Capacity Range

Range of motion is controlled automatically based on platform load.

S-45 XC, S-45 XC Trax with 13ft / 4m Platform, Range of Motion Chart



Maximum platform capacity

1 600 lbs 272 kg

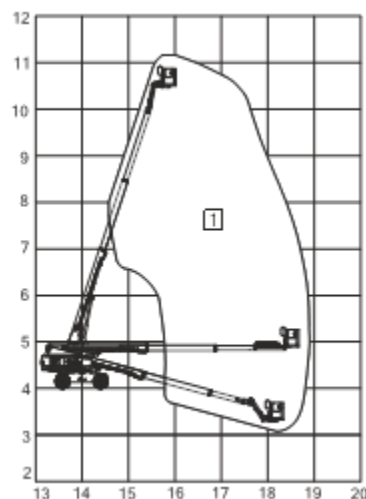
Vertical Values

2	-5 ft	-1.52 m
3	0 ft	0 m
4	5 ft	1.52 m
5	10 ft	3.05 m
6	15 ft	4.57 m
7	20 ft	6.1 m
8	25 ft	7.62 m
9	30 ft	9.14 m
10	35 ft	10.67 m
11	40 ft	12.19 m
12	45 ft	13.72 m
13	50 ft	15.24 m
14	55 ft	16.76 m

Horizontal Values

15	-10 ft	-3.05 m
16	-5 ft	-1.52 m
17	0 ft	0 m
18	5 ft	1.52 m
19	10 ft	3.05 m
20	15 ft	4.57 m
21	20 ft	6.1 m
22	25 ft	7.62 m
23	30 ft	9.14 m
24	35 ft	10.67 m
25	40 ft	12.19 m

S-65 XC, S-65 XC Trax with 13ft / 4m Platform, Range of Motion Chart



Maximum platform capacity

1 600 lbs 272 kg

Vertical Values

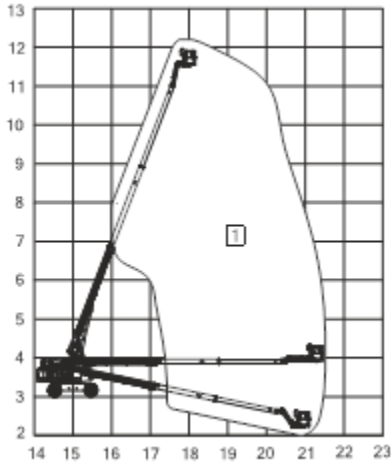
2	-20 ft	-6.1 m
3	-10 ft	-3.05 m
4	0 ft	0 m
5	10 ft	3.05 m
6	20 ft	6.1 m
7	30 ft	9.14 m
8	40 ft	12.19 m
9	50 ft	15.24 m
10	60 ft	18.29 m
11	70 ft	21.34 m
12	80 ft	24.39 m

Horizontal Values

13	-10 ft	-3.05 m
14	0 ft	0 m
15	10 ft	3.05 m
16	20 ft	6.1 m
17	30 ft	9.14 m
18	40 ft	12.19 m
19	50 ft	15.24 m
20	60 ft	18.29 m

S-45 XC, S-45 XC Trax, S-65 XC, S-65 XC Trax, S-85 XC with 13ft / 4m Platform

S-85 XC with 13ft / 4m Platform, Range of Motion Chart



Maximum platform capacity

1 600 lbs 272 kg

Vertical Values

2	-10 ft	-3.05 m
3	0 ft	0 m
4	10 ft	3.05 m
5	20 ft	6.1 m
6	30 ft	9.14 m
7	40 ft	12.19 m
8	50 ft	15.24 m
9	60 ft	18.29 m
10	70 ft	21.34 m
11	80 ft	24.39 m
12	90 ft	27.43 m
13	100 ft	30.48 m

Horizontal Values

14	-10 ft	-3.05 m
15	0 ft	0 m
16	10 ft	3.05 m
17	20 ft	6.1 m
18	30 ft	9.14 m
19	40 ft	12.19 m
20	50 ft	15.24 m
21	60 ft	18.29 m
22	70 ft	21.34 m
23	80 ft	24.39 m

Tilt Sensor Activation Settings

Model	Tilt/Slope (front to back)	Maximum Boom Angle/ Platform Load
		600 lbs (272 kg)
S-45 XC S-45 XC Trax	5°	75°
S-65 XC S-65 XC Trax	4°	71.7°
S-85 XC	3°	69°
Model	Tilt/Slope (front to back)	Maximum Platform Height/Platform Load
		600 lbs (272 kg)
S-45 XC S-45 XC Trax	5°	13.59 m (44 ft 7 in')
S-65 XC S-65 XC Trax	4°	19.81 m (64 ft 11 in')
S-85 XC	3°	25.9 m (85 ft)
Model	Tilt/Slope (front to back)	Maximum Platform Reach/Platform Load
		600 lbs (272 kg)
S-45 XC S-45 XC Trax	5°	9.66 m (31 ft 8 in')
S-65 XC S-65 XC Trax	4°	14.32 m (46 ft 11 in')
S-85 XC	3°	19.7 m (64 ft 6 in')

S-45 XC, S-45 XC Trax, S-65 XC, S-65 XC Trax, S-85 XC with 13ft / 4m Platform

The range of motion light is on when the platform load exceeds 600 lbs/272 kg.



Light on indicates restricted range of motion due to platform weight.

The range of motion light is on when the platform load is less than 600 lbs/272 kg and on a slope.



Light on indicates restricted range of motion due to platform weight and slope angle.

Note: When the Machine On Incline indicator light is on and the tilt alarm sounds, the following functions are affected; drive and lift up functions are disabled. Follow the Operator Envelope Indicator Lights procedure to restore drive and lift functions.

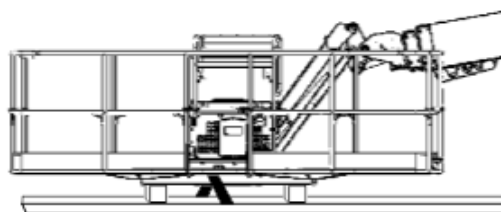


Securing the Platform – S-45 XC, S-45 XC Trax with 13ft / 4m Platform

Make sure the jib and platform are in the stowed position.

Transporting a machine with a 13ft / 4m Platform on a standard width trailer requires the turntable to be rotated 4 degrees. Lock the rotated turntable using the Off-center Transport Lock (p/n 1312373GT). The 13ft / 4m Platform must be fully rotated as shown in the image below.

Secure the platform with a nylon strap placed parallel to the strap guides. Do not use excessive downward force when securing the boom section.



Model	S-45 XC, S-45 XC Trax with 13ft / 4m Platform
Overall transportation length, platform rotated	34 ft 6 in
Turntable rotation angle	4.0°
Platform dimensions, 13ft / 4m (length x width)	13 ft 1 in 1/2 x 2 ft 11 in 13/16

Continuous improvement of our products is a Genie policy. Product specifications are subject to change without notice or obligation.

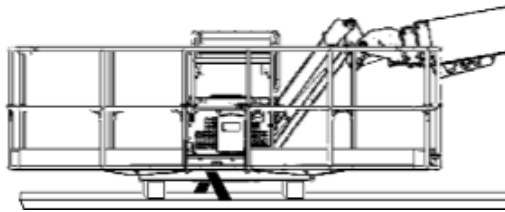
S-45 XC, S-45 XC Trax, S-65 XC, S-65 XC Trax, S-85 XC with 13ft / 4m Platform

Securing the Platform – S-65 XC, S-65 XC Trax with 13ft / 4m Platform

Make sure the jib and platform are in the stowed position.

Transporting a machine with a 13ft / 4m Platform on a standard width trailer requires the turntable to be rotated 3.5 degrees. Lock the rotated turntable using the Off-center Transport Lock (p/n 1312374GT). The 13ft / 4m Platform must be fully rotated as shown in the image below.

Secure the platform with a nylon strap placed parallel to the strap guides. Do not use excessive downward force when securing the boom section.



Model	S-65 XC, S-65 XC Trax with 13ft / 4m Platform
Overall transportation length, platform rotated	37 ft 1/2 in
Turntable rotation angle	3.5°
Platform dimensions, 13ft / 4m (length x width)	13 ft 1 in 1/2 x 2 ft 11 in 13/16

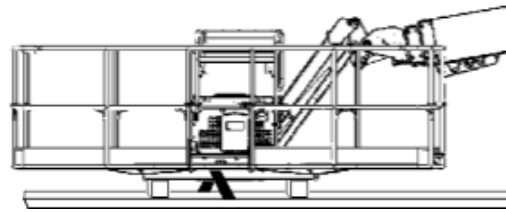
Continuous improvement of our products is a Genie policy. Product specifications are subject to change without notice or obligation.

Securing the Platform – S-85 XC with 13ft / 4m Platform

Make sure the jib and platform are in the stowed position.

Transporting a machine with a 13ft / 4m Platform on a standard width trailer requires the turntable to be rotated 3.5 degrees. Lock the rotated turntable using the Off-center Transport Lock (p/n 1312375GT). The 13ft / 4m Platform must be fully rotated as shown in the image below.

Secure the platform with a nylon strap placed parallel to the strap guides. Do not use excessive downward force when securing the boom section.



Model	S-85 XC with 13ft / 4m Platform
Overall transportation length, platform rotated	45 ft 1/2 in
Turntable rotation angle	3.5°
Platform dimensions, 13ft / 4m (length x width)	13 ft 1 in 1/2 x 2 ft 11 in 13/16

Continuous improvement of our products is a Genie policy. Product specifications are subject to change without notice or obligation.

Installation Instructions



Observe and Obey:

- ☒ This procedure shall be completed by a person authorized to install the 13ft / 4m Platform.
- ☒ Immediately tag and remove from service a damaged or malfunctioning machine.
- ☒ Repair any machine damage or malfunction before operating the machine.

Before Starting Installation:

- ☒ Read, understand and obey the safety rules and operating instructions in the appropriate operator's manual.
- ☒ Be sure that all necessary tools and parts are available and ready for use.
- ☒ Read this procedure completely and adhere to the instructions. Attempting shortcuts may produce hazardous conditions.

Tools required:

Assorted SAE wrenches

Assorted SAE sockets

Ratchet

Service and Repair Manual

Tools for software update (if required):

Torx T15 screwdriver

PC or Laptop with Internet Browser

USB flash drive

Installation Instructions

Contents of Kit 1312552GT

Item	Part No.	Decal Description	Qty.
(1)	28236	Warning – Improper Operation	1
(2)	82237	Danger – Electrocution Hazard	1
(3)	82487	Label – Read the Manual	1
(4)	114390	Danger – Electrocution Hazard	1
(5)	114416	Danger – Tip-over Hazard, Tilt Alarm	1
(6)	114473	Label – Tilt Alarm	1
(7)	133067	Label – Electrocution Hazard	1
(8)	218559	Danger, Warning – Tip-over, Crush Hazard	1
(9)	219487	Label – Platform Overload	1
(10)	219956	Label – Platform Overload	1
(11)	219958	Label – Tip-over, Crush Hazard	1
(12)	1256425	Label – Danger, Electrocution Hazard	1
(13)	1262342	Warning – Slope Rating S-60/65 XC	1
(14)	1281183	Warning – Runaway Machine Hazard, S-80/85 XC	1
(15)	1281184	Label – Runaway Machine Hazard, S-80/85 XC	1
(16)	1284099	Warning – Runaway Machine Hazard S-60/65 XC	1

Item	Part No.	Decal Description	Qty.
(17)	1289062	Warning – Runaway Machine Hazard, S-40/45 XC	1
(18)	1289063	Warning – Runaway Machine Hazard S-40/45 XC	1
(19)	1295271	Danger – Capacity, S65XC 13ft / 4m Platform	1
(20)	1299668	Decal - Swing Lock, 13ft / 4m Platform S-65 XC/Trax	2
(21)	1309685	Danger – Capacity, S45XC 13ft / 4m Platform	1
(22)	1309688	Decal - Swing Lock, 13ft / 4m Platform S-45 XC/Trax	2
(23)	1312368	Decal - Swing Lock, 13ft / 4m Platform, S85XC	2
(24)	1312369	Danger – Capacity, S85XC, 13ft / 4m Platform	1
(25)	1312371	Instructions – Installation, 13ft / 4m Platform	1
(26)	1312383	Label – Warning, Read the Manual, Word	1
(27)	1312384	Label – Danger, Capacity, 13ft / 4m Platform, Word S45 XC	1
(28)	1312385	Label – Danger, Capacity, 13ft / 4m Platform, Word S65 XC	1
(29)	1312386	Label– Danger, Capacity, 13ft / 4m Platform, Word S85 XC	1
(30)	1312388	Label - 13ft / 4m Platform, Max Allowable Chassis Inclination	1
(31)	1312389	Label – Warning, Read the Manual, Symbol	1
(32)	1312398	Assembly, Tri-Entry 13ft / 4m Platform	1

Installation Instructions

Note: Perform this procedure on a firm, level surface with the machine in the stowed position unless otherwise instructed.

- 1 Adjust the jib so the platform is approximately 12 inches / 30.5 cm off the ground.
- 2 Remove any optional accessories from the platform and set aside.

Example: Welder, Contact Alarm, Panel Cradle, etc.

Note: Most optional accessories can be reinstalled on the 13ft / 4m platform. Refer to the list of accessories that are NOT approved for use on the 13ft / 4m platform.

- 3 Remove the cable clamp from the top of the platform mounting weldment.
- 4 Remove the mounting fasteners from the power to platform outlet box bracket. Lay the outlet box and bracket assembly off to the side. Do not disconnect the wiring.
- 5 Remove the foot switch mounting fasteners.

- 6 Remove the cover plate from the bottom of the foot switch to access the foot switch wire terminals.
- 7 Tag and disconnect the foot switch wiring from the foot switch. Remove the cable from the back of the platform.
- 8 Remove the platform control box mounting fasteners. Lower the control box and set it aside.

NOTICE

Component damage hazard.
Cables can be damaged if they are kinked or pinched.

Note: If your machine is equipped with an airline to platform option, the airline must be disconnected from the platform before removal.

- 9 Support and secure the platform to an appropriate lifting device.

Installation Instructions

- 10 Remove the platform mounting fasteners and remove the platform from the machine.

⚠ WARNING

Crushing hazard. The platform could become unstable and fall when it is removed from the machine if not properly supported.

- 11 Install the provided Operator's Manual Supplement into the manual storage box in the platform.
- 12 Install the 13ft / 4m platform using the removal procedure in reverse order.
- 13 Install the contact alarm onto the platform.

Note: Do not install any optional accessories onto the platform until the platform load cell has been calibrated. Calibration is required.

- 14 If required, update the machine software. Software update is required when the 13ft / 4m platform is installed onto an approved model. Refer to *Checking the Application and Bootloader Revisions from the Ground Controls*.

⚠ DANGER

Tip-over hazard. Failure to upload the appropriate software version for the correct approved model and/or failure to select the appropriate platform type, will result in death or serious injury.

Software Update

Checking the Application and Bootloader Revisions from the Ground Controls.

Verifying the machine application and bootloader firmware revision levels must be completed before updating the software.

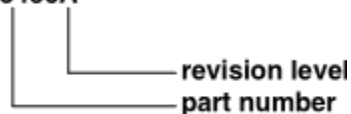
Not all machines will require a software update. Software update is required when the 13ft / 4m platform is installed onto a different approved model.

- 1 Turn the key switch to ground controls.
- 2 Press and hold buttons **1** and **4**. Pull out the red Emergency Stop button to the on position.
- 3 Read and record the firmware revisions.

Bootloader Firmware: _____

Application Firmware: _____

Example: 123456A



Note: The application firmware revision is shown under **Current Firmware**.

- 4 Press Escape. Press OK to exit bootloader mode.

Bootloader Firmware

- ⊙ Result: The Bootloader Firmware does not need to be updated. Continue to *Selecting the Platform Option* - Revision "1.7.0" or higher.
- ⊙ Result: The Bootloader Firmware must be updated. Continue to *Updating the Machine Software* - Revision "F" or lower.

Application Firmware

S-45 XC, S-45 XC Trax, S-65 XC, S-65 XC Trax, S-85 XC: The Application Firmware must be updated to revision 1.8.0 or higher. If the Current Firmware revision is lower, continue to Updating the Machine Software. If the Current Firmware revision is 1.8.0 or higher, continue to Selecting the Platform Option.

Note: If a Firmware update is not required, a zero load platform calibration must be performed. Refer to Repair Procedure, *How to Perform a Zero Load Platform Calibration* in the Service and Repair manual that is appropriate for your machine.

Software Update

Updating the Machine Software

Note: Access to the internet is required to perform this procedure.

- 1 Click on the Hyperlink below or open an internet browser and copy and paste or type the link into the address bar and press enter.
<https://firmware.genielift.com/>
<https://www.genielift.com/en/support/firmware>
- 2 Select the model that is appropriate for your machine under **Machine Model**. Select **Search**.
- 3 Select the appropriate **Firmware File** to be updated. Select **I Accept**. Save or print a copy of the **ALC-600 Software Update instructions 1295343GT**.
- 4 Follow the instructions to update the machine software in the following order.
 - Checking the File System Format of a USB Flash Drive.
 - Firmware Site Download
 - How to Enter ALC-600 Software Update Mode
 - Model Configuration and Region Settings (Note: Do not perform steps 11 and 12.)
- 5 Push in the red Emergency Stop button to the off position.

Software Update

Selecting the Platform Option.

The appropriate platform option must be selected when installing or removing the 13ft / 4m platform.



Tip-over hazard. Not selecting the appropriate platform option will result in death or serious injury.

- 1 Press and hold buttons **2** and **3**. Pull out the red Emergency Stop button to the on position.

- 2 You will be prompted for a password.

Enter **3 - 3 - 2 - 4**.

- 3 Press the **Settings** button to access the settings menu.

Note: There will be a delay while the menu is being loaded on the display screen.

- 4 Select **Model Configuration**. Press **OK**.

- 5 Select **Platform**. Press **OK**.

- 6 Select the appropriate platform. Press **OK**.

- **Standard**
- **13ft / 4m**

- 7 Press **Escape / Escape / Escape**.
- 8 Push in the red Emergency Stop button to the off position.
- 9 Perform a zero load platform calibration. Refer to Repair Procedure, *How to Perform a Zero Load Platform Calibration* in the Service and Repair manual that is appropriate for your machine.
- 10 Perform function test. Refer to the Operator's Manual located on your machine.
- 11 Return the machine to service.

California Proposition 65



WARNING

Operating, servicing and maintaining this equipment can expose you to chemicals including engine exhaust, carbon monoxide, phthalates, and lead, which are known to the State of California to cause cancer and birth defects or other reproductive harm. These chemicals can be emitted from or contained in other various parts and systems, fluids and some component wear by-products. To minimize exposure, avoid breathing exhaust, do not idle the engine except as necessary, service your equipment and vehicle in a well-ventilated area and wear gloves or wash your hands frequently when servicing your equipment or vehicle and after operation. For more information go to www.P65Warnings.ca.gov/passenger-vehicle.

Breathing diesel engine exhaust exposes you to chemicals known to the State of California to cause cancer and birth defects or other reproductive harm.

- Always start and operate the engine in a well-ventilated area.
- If in an enclosed area, vent the exhaust to the outside.
- Do not modify or tamper with the exhaust system.
- Do not idle the engine except as necessary.

For more information go to www.P65warnings.ca.gov/diesel.